


## Declaration of Conformity

We, Manufacturer/Importer  
**AirLive Technology Corporation**  
4F, No.132, Lane 235, Baoqian Rd., Xindian Dist.,  
New Taipei City 23145, Taiwan

Declare that the product  
**8-Port 10G Fiber Multi Gigabit Switch**  
**Live-10XGF800**  
**8-Port 10G WebSmart Fiber Multi Gigabit Switch**  
**WEB-10XG8**  
is in conformity with

In accordance with 2014/30/EU and 2014/35/EU Directive

Clause	Description
■ EN 55032:2015/A1:2020	Electromagnetic compatibility (EMC)
■ EN IEC 62368-1:2020+A11:2020	Electromagnetic compatibility (LVD)
■ CE marking	



Live-10XGF800



WEB-10XGF8

## Manufacturer/Importer

Name : A van Rossem Position/ Title : Product Manager  
Place : Republic of China (Taiwan) Date : June 2024

## Regulatory Approvals

### • CE Statement

This product complies with the 2014/30/EU and 2014/35/EU directives, including the following safety and EMC standards:

- **EN 55032:2015/A1:2020**  
Electromagnetic compatibility (EMC)
- **EN IEC 61000-3-2:2019/A1:2021**  
Electromagnetic compatibility (EMC)
- **EN 61000-3-3:2013/A2:2021**  
Electromagnetic compatibility (EMC)
- **EN 55035:2017/A11:2020**  
Electromagnetic compatibility (EMC)
- **EN IEC 62368-1:2020+A11:2020**  
Electromagnetic compatibility (LVD) - Safety


### • CE Marking Warning

This is a Class A product. In a domestic environment this product may cause radio interference in which case the user may be required to take adequate measures.

### • RoHS Statement

This product complies with RoHS directive 2011/65/EU and amendment Commission Delegated Directive (EU)2015/863.

- **IEC 62321-3-1:2013**
- **IEC 62321-5:2013**
- **IEC 62321-4:2013+AMD1:2017**
- **IEC 62321-7-1:2015**
- **IEC 62321-7-2:2017**
- **IEC 62321-6:2015**
- **IEC 62321-8:2017**

 AirLive Technology Corporation declares that this device is in compliance with the essential requirements and other relevant provisions of directive 2014/30/EU.





airlive®

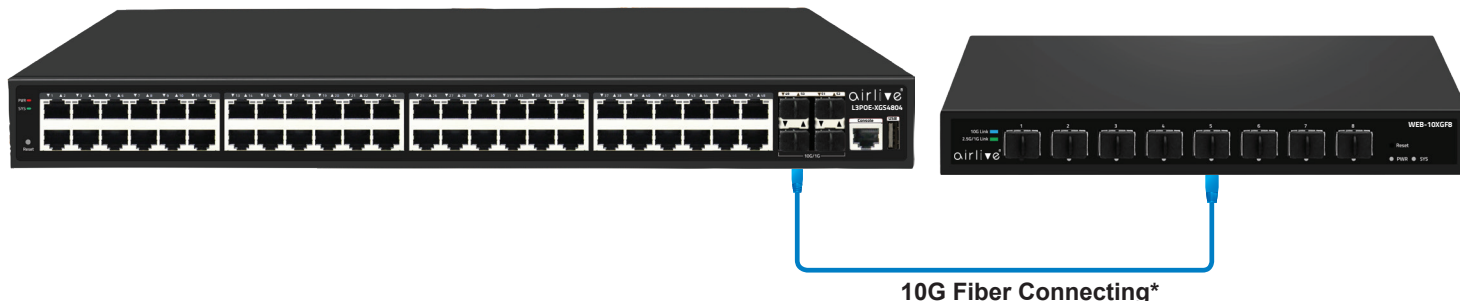
www.airlive.com

Live-10XGF800, WEB-10XGF8  
10G Fiber Multi Gigabit Switch

Quick Setup Guide ▶

▼ Installation Steps

Figure A



LED DEFINITIONS

Power	Red ON	Power is ON and Normal.
	Red OFF	The switch is not receiving power.
SYS	Red ON	System startup completed.
	Red Flashing	System startup in progress.
SFP Port LED)	Blue ON	10G Link Connection is normal.
	Green ON	1G/2.5G Link Connection is normal.
	Flashing	Data transmitting.
	OFF	Link is Offline.

EN English

Installation Step:

1. Remove the switch and accessories from the package.
2. Connect power to the switch. Make sure that "Power" LED is on.
3. Check the Port LED indicator status. When a device is connected the port light up.
4. A Fiber module is needed to make a network connection. The speed of the network connection depends on the module which is used.
5. For more product information visit [www.airlive.com](http://www.airlive.com).

\* Fiber module sold separately, not included with the switch.

EN English

Important Information for model WEB-10XGF8 only.

- The default IP address: **192.168.2.1**
- The default username / password is **admin**

Installation Step:

1. Set your PC's IP address to 192.168.2.50.
2. Open your web browser and enter "192.168.2.1" to get into the switch Web Management.
3. Enter "admin" for username, "admin" for password.